

RESOLUTION NO. 1225-24

A RESOLUTION AMENDING 1212-23
"RESTRICTIVE PARKING ZONES"

WHEREAS, Chapter 450, Article II of the Bel Air Town Code authorizes the Board of Town Commissioners of Bel Air to describe and designate restrictive parking areas; and

WHEREAS, the Board wishes to modify the parking zone legislation by prohibiting parking at or near intense development and prevent impact to residential areas nearby; and

WHEREAS, The Board wishes to prohibit parking on the north and south sides of Lester Way; and

WHEREAS, The Board desires to prohibit parking on both sides of Atwood Road for a distance of 200 feet from Baltimore Pike; and

Section 1. **NOW, THEREFORE, BE IT RESOLVED** by the Bel Air Board of Town Commissioners that the following areas shall be revised as a Restrictive Parking Zone in the Town of Bel Air, with parking to be prohibited at all times or as designated:

- The west side of Archer Street from its intersection with Baltimore Pike for a distance of 75 feet.
- The east side of Atwood Road from its intersection with Baltimore Pike to its intersection with Marketplace Drive.
- The east side of the 600 block of Atwood Road from its intersection with Red Oak Drive a point 45 feet in a southerly direction.
- The **east and** west side of Atwood Road from its intersection from Baltimore Pike to a point **200 100** feet north of the same intersection.
- The west side of Atwood Road from its intersection with MacPhail Road in a northerly direction to its intersection with Baltimore Pike, between the hours of 8:00 a.m. and 5:30 p.m. Monday through Friday.
- The east side of Barnes Street from its intersection with Powell Avenue to a point 110 feet north of Shaw Street.

- The west side of Barnes Street beginning at Fulford Avenue and running for a distance of 50 feet in a southerly direction.
- The north and south sides of Boulton Street beginning at Kelly Avenue and running for a distance of 790 feet in an easterly and westerly direction to the right-of-way line of the new Route 24 intersection.
- The north side of East Broadway from its intersection with Hickory Avenue to a point 60 feet east of the same intersection.
- The north and south side of West Broadway from its intersection with North Main Street to a point 150 feet west of the same intersection.
- The east side of the median in Cheswold Court 120 feet from its intersection with MacPhail Road to a point 183 feet south of the same intersection.
- The east and west side of Choice Street from its intersection with Broadway to a point 100 feet north of the same intersection.
- The north side of Churchville Road from its intersection with Hickory Avenue to 500 feet east of the intersection with Giles Street.
- The west side of Courtland Place beginning at a point 185 feet from its intersection with Shannon Drive, to a point of 430 feet in a northerly direction.
- The north side of Courtland Street from Main Street to Bond Street.
- The south side of West Courtland Street from its intersection with Bond Street to a point 73 feet east of the same intersection.
- The north side of Cressy Road from its intersection with Rockspring Avenue to a point 100 feet east of the same intersection.
- The south side of Cressy Road from its intersection with Rockspring Avenue to a point 350 feet east of the same intersection.
- The north side of Crocker Street 60 feet from Hickory Avenue.
- The north and south side of Eastern Avenue from its intersection with South Main Street to a point sixty (60) feet east of the same intersection.
- North side of Ellendale Street 215 feet east of its intersection with William Street to a point 320 feet east of the intersection with Rockspring Road between the hours of 7:00 a.m. to 5:00 p.m.
- The north side of Ellendale Street from its intersection with Franklin Street to

a point 550 feet west of the same intersection.

- The south side of Ellendale Street 200 feet from its intersection with Williams Street to a point 60 feet east of the Rockspring Avenue intersection.
- The north side of English Manor Lane from its intersection with Gateway Drive. The Gate House entry of English Country Manor Condominiums curb shall be designated as a fire lane.
- The east and west side of Ewing Street from its intersection with Churchville Road to a point 30 feet south of the same intersection.
- The east side of Franklin Street from its intersection with Broadway to a point 703 feet north of the same intersection.
- The east side of Franklin Street from its intersection with Gordon Street to a point 211 feet north of the same intersection.
- Franklin Street, east side, from its intersection with Broadway to a point 35 feet south of said intersection.
- Franklin Street, west side, from its intersection with Broadway to a point 111 feet south of said intersection, except designated handicap parking space.
- The north and south sides of George Street from its intersection with Hays Street to its intersection with Archer Street.
- The east side of Giles Street from its intersection with Fulford Avenue to its intersection with Churchville Road.
- The east and west side of Giles Street from its intersection with Churchville Road to a point 30 feet south of the same intersection.
- The north side of East Gordon Street from a point 210 feet from its intersection with Main Street in an easterly direction to a point 260 feet from the same intersection.
- The north side of East Gordon Street from its intersection with North Hickory Avenue to a point 90 feet west of the same intersection.
- The north side of West Gordon Street from its intersection with North Bond Street to Wallace Street moving in a westerly direction.
- The south side of Gordon Street from its intersection with Main Street to a point 320 feet east of the same intersection.
- The south side of West Gordon Street from its intersection with Wallace Street going in an easterly direction to its intersection with North Bond

Street.

- The east side of the median in Grosvenor Drive 167 feet from its intersection with MacPhail Road to a point 385 feet south of the same intersection.
- The east and west side of Hall Street from its intersection with Rockspring Avenue to a point fifty (50) feet south of the same intersection.
- The south side of Harlan Street 77 feet from its intersection with McCormick Street.
- The west side of Hays Street from its intersection with George Street to a point 25 feet south of the same intersection.
- The west side of Hays Street from its intersection with George Street to a point 75 feet north of the same intersection.
- The east side of Hickory Avenue from its intersection with Broadway to a point 30 feet south of its intersection with Wright Street.
- The east side of Hickory Avenue from a point 30 feet south of its intersection with Wright Street to a point 136 feet south of the Wright Street intersection between the hours of 7-9 a.m. and 4-6 p.m.
- The east side of Hickory Avenue from a point 136 feet south of Wright Street to a point 334 feet south of the Wright Street intersection.
- The east side of Hickory Avenue from a point 334 feet south of Wright Street to a point 448 feet south of the Wright Street intersection between the hours of 7-9 a.m. and 4-6 p.m.
- The east side of Hickory Avenue from a point 370 feet north of its intersection with Lee Way to a point 50 feet south of its intersection with Lee Way.
- The east side of Hickory Avenue from a point 60 feet north of its intersection with Pennsylvania Avenue to a point 125 feet south of its intersection with Pennsylvania Avenue.
- The east side of Hickory Avenue from a point 125 feet south of its intersection with Pennsylvania Avenue to a point 215 feet north of its intersection with Courtland Street between the hours of 7-9 a.m. and 4-6 p.m.
- The east side of Hickory Avenue from a point 215 feet north of its intersection with Courtland Street to its intersection with Courtland Street.
- The west side of Hickory Avenue from its intersection with Broadway to Lee

Street.

- The west side of Hickory Avenue from a point 80 feet north of its intersection with Lee Street to its intersection with Courtland Street.
- The south side of Howard Street from its intersection with Rockspring Avenue to its intersection with Roland Avenue.
- The north and south sides of Idlewild Street from its intersection with South Main Street for a distance of 150 feet.
- The north and south sides of John Street from its intersection with Bond Street to its intersection with Wallace Street.
- The east and west sides of Kenmore Avenue from intersection with Baltimore Pike in a southerly direction to its intersection with Heighe Street.
- The north side of Lee Street from the intersection of Main Street to a point 180 feet east.
- The north side of Lee Street from the intersection of Hickory Avenue to a point 50 feet west.
- The north side of Lee Street, starting at a point 260 feet west of Hickory Avenue for a distance of 30 feet.
- The north side of Lee Street beginning 50 feet west of Hickory Avenue for a distance of 150 feet between the hours of 7 a.m. and 5 p.m.
- The south side of Lee Street between Main Street and Hickory Avenue.
- The north side of Lee Way for a distance of 42 feet from its intersection with Hickory Avenue.
- The north side of Lee Way, starting at a point 133 feet from its intersection with Hickory Avenue for a distance of 39 feet.
- The south side of Lee Way from its intersection with Hickory Avenue for a distance of 45 feet.
- The south side of Lee Way 105 feet east from its intersection with Hickory Avenue to 235 feet from the same intersection.
- The **north and** south sides of Lester Way **and the north side extending 160 feet** from Bond Street **to Wallace Street.**
- The north and south side of Linwood Avenue from its intersection with South Main Street to its intersection with Barnes Street between the hours of 7:30

a.m. and 5:30 p.m. Monday through Friday.

- The north side of Linwood Avenue adjacent to the John Carroll School foot path for a distance of 36 feet.
- The north side of Linwood Avenue from its intersection with Giles Street to a point 110 feet east of the same intersection.
- The south side of Linwood Avenue from a point 80 feet west of its intersection with Maitland Street to its intersection with Hunter Drive 7:30 a.m. to 5:30 p.m. Monday through Friday.
- The north side of MacPhail Road from its intersection with Woodbury Way for a distance of 75 feet in an easterly direction.
- The north and south side of West MacPhail Road from its intersection with Route 24 in a westerly direction to a point nine hundred thirty (930) feet east of Tollgate Road.
- The south side of West MacPhail Road 430 feet from the intersection with Tollgate Road to a point 210 feet in an easterly direction.
- The east side of South Main Street from the southernmost entrance to Bradford Park parking lot to a point 25 feet in a northerly direction.
- The east side of Main Street from a point 25 feet south of the northernmost access to Bradford Park parking lot for a distance of 54 feet in a northerly direction.
- The west side of South Main Street from a point 75 feet south of the intersection with Courtland Street to a point 125 feet south of the same intersection.
- The east and west sides of Majors Choice Drive from its intersection with Moores Mill Road, south for a distance of 200 feet.
- The west side of Ma & Pa Road south of Moores Mill Road to a point 590 feet south of the same intersection.
- The south side of Maulsby Avenue from its intersection with Rockspring Avenue for a distance of 135 feet in a westerly direction.
- The north and south sides of Office Street from Main Street to Bond Street.
- The south side of East Pennsylvania Avenue from its intersection with Main Street to its intersection with Hickory Avenue.
- The north and south sides of Pennsylvania Avenue from its intersection with

Main Street to its intersection with Bond Street.

- The north side of West Pennsylvania Avenue from its intersection with Bond Street to its intersection with Hays Street.
- The south side of West Pennsylvania Avenue from its intersection with Bond Street to a point approximately 95 feet from the same intersection.
- The north and south sides of Powell Avenue between South Main Street and Barnes Street.
- The east and west side of the entrance road into the Public Works Building from its intersection with Churchville Road to the Public Works Building.
- The east side of the Rockfield Playground parking lot from its intersection with the drive lane to a point 190 feet from the same intersection and including the radial drive connecting the upper and lower sections of the parking lot.
- The north side of the Rockfield Playground parking lot entrance drive from the John Carroll access road for a distance of 325 feet in a westerly direction.
- The west side of Roland Avenue from its intersection with Hall Street for a distance of 260 feet in a northerly direction.
- The southeast side of Roland Avenue from its intersection with Howard Street to a point 50 feet from the same intersection.
- The north and south sides of Shaw Street from its intersection with Maitland Street to its intersection with Barnes Street.
- The north side of Thomas Street, from its intersection with Hays Street in a westerly direction to a point 193 feet west of its intersection with Williams Street.
- The north and south sides of Thomas Street beginning at a point 89 feet west of Western Alley and running for a distance of 330 feet in a westerly direction.
- The north and south sides of Thomas Street beginning at a point 89 feet west of Western Alley to its intersection with Atwood Road.
- The southeast side of Thomas Street from its intersection with Archer Street to a point 100 feet east of the same intersection.
- The parcel of land owned by the Town of Bel Air and adjacent to said alley, recorded in Plat Book 6, Page 96, and measuring approximately 25 feet by

104 feet.

- The ten (10) foot wide alley, also known as West Side Alley, from its intersection with Bond Street for its entire length of approximately 171 feet.
- The east side of Wingate Court at its intersection with Grosvenor Drive.
- The west side of the circle at the terminus of Wingate Court.
- The south side of Wright Street beginning at a point 230 feet east of Hickory Avenue and running for a distance of 155 feet in an easterly direction.
- The west side of Williams Street from the intersection with Ellendale Street for distance of 170 feet in a northerly direction.
- The east side of Williams Street from the intersection with Ellendale Street for a distance of 120 feet in a southerly direction.
- The north side of Wright Street beginning at a point 300 feet east of Hickory Avenue and running a distance of 40 feet in an easterly direction.

The following areas shall be designated as no stopping except for emergency vehicles:

- The north and south sides of Office Street.

Section 2. **AND BE IT FURTHER RESOLVED** that the following areas shall be designated as Restrictive Parking Zones in the Town of Bel Air with parking limited to the maximum period of time as follows:

- A. The following areas shall have a six (6) hour parking limit:

Bond/Thomas parking lot located on the west side of South Bond near its intersection with Thomas Street, except for those spaces designated "Parking by Permit Only."

Gordon Street, south side, from a point 20 feet east of Main Street, to a point 275 feet in an easterly direction.

Hays Street, east side, from Baltimore Pike to a point 403 feet south of Thomas Street.

Hays Street, west side, from Baltimore Pike to Thomas Street, except spaces designated 15 or 30 minutes.

Hickory Avenue parking lot fronting on the east side of Hickory Avenue and located between Pennsylvania Avenue and Courtland Street excepting

those spaces designated as “parking by permit only”.

- B. The following areas shall have a four (4) hour parking limit:

Town-owned parking lot located on the east side of Burns Alley between Courtland Street and Pennsylvania Avenue.

Downtown parking lot at the intersection of Main Street and Office Street located between Main Street and Burns Alley.

- C. The following areas shall have a three (3) hour parking limit:

Alice Anne Street, north side, from Bond Street to a point 190 feet from same intersection.

Alice Anne Street, south side, from Bond Street to a point 126 feet from same intersection.

Alice Anne Street, south side, from Hays Street to Williams Street.

Hays Street, east side, from Thomas Street to Alice Anne Street.

Hays Street, east side, from Thomas Street to a point 403 feet south of Thomas Street.

- D. The following areas shall have a two (2) hour parking limit:

Alice Anne Street from Williams Street to Wilson Street

North Atwood Road, west side, from the termination of the “No Parking Zone” at Baltimore Pike for a distance of 64 feet in a northerly direction.

Armory parking lot located behind the Reckord Armory, except those spaces designated parking by permit only.

Bond Street, east side, beginning at a point 308 feet from its intersection with Gordon Street and running 111 feet south.

Bond Street, west side, beginning at a point 145 feet from its intersection with West Gordon Street to John Street.

Courtland Street, south side, from a point 100 feet east of Bond Street, to a point 250 feet east of the same intersection.

East Courtland Street, south side, Hickory Avenue to a point 162 feet from the same intersection.

Gordon Street, north side, from a point 200 feet east of Main Street to a

point 800 feet east of the same intersection.

Hays Street, west side, from Alice Anne Street to Thomas Street.

Hickory Avenue, east side, from a point twenty-five (25) feet south of the intersection with Pennsylvania Avenue to the entrance to the Town parking lot on Hickory Avenue.

Idlewild Road, south side, from its intersection with Country Village Drive in an easterly direction for a distance of 285 feet between the hours of 8:00 a.m. and 6:00 p.m., excluding holidays.

Lee Street between Main Street and Bond Street.

Lee Street, north side, beginning at a point 180 feet east of the Main Street intersection for a distance of 110 feet

Lee Street, north side, beginning 50 feet west of Hickory Avenue in an easterly direction 150 feet between the hours of 5 p.m. and 7 a.m. on weekdays and all hours during the weekend.

Lee Way, north side, from the intersection with Hickory Avenue to a point approximately 208 feet east of Pennsylvania Avenue.

Lee Way, south side from a point 211 feet from the intersection with Hickory Avenue to Dublin Way.

Main Street, east and west side, from US 1 to Gordon Street, except spaces designated no parking zones, drop-off zones or 15 or 30 minute zones.

Main Street, west side, from north side of 120 S. Main Street to Lee Street.

Metered spaces on the South Main Street parking lot at the intersection of Main Street and Churchville Road.

Majors Choice Drive, east side, from a point 200 feet south of its intersection with Moores Mill Road, to its intersection with Shamrock Road.

Pennsylvania Avenue parking lot located and fronting on the north side of Pennsylvania Avenue between Main Street and Hickory Avenue except spaces designated 15 minutes.

West Pennsylvania Avenue, south side from Bond Street to Hays Street, excepting the 15 minute drop-off lane and the no parking zones.

Town owned parking lot located and fronting on Pennsylvania Avenue between Shannon Drive and Hickory Avenue except spaces designated as permit parking area.

Thomas Street, north and south sides from Bond Street to Hays Street.

Thomas Street, south side, from Hays Street to a point 500 feet from the same intersection between the hours of 9 a.m. to 5 p.m.

Williams Street, east side, from a point 300 feet, south of Alice Anne Street to Thomas Street.

- E. The following areas shall have a one (1) hour parking limit:

East Pennsylvania Avenue, north side from Hickory Avenue to the terminus of the Harford County Library property except spaces designated thirty (30) minutes.

- F. The following areas shall have a thirty (30) minute parking limit:

One (1) loading zone space, adjacent to rear entrance of 111 Thomas Street, on the Town-owned parking lot fronting on South Bond Street, south of Thomas Street.

North Atwood, east side, from Termination of "No Parking Zone" to a point 106 feet in a northerly direction.

Hays Street, west side from a point 100 feet south of its intersection with Thomas Street to a point 140 feet south of the same intersection.

East Pennsylvania Avenue, north side, six (6) parking spaces to either side of the main entrance to the Harford County Library.

- G. The following areas shall have a fifteen (15) minute parking limit:

Atwood Road, west side from a point 737 feet south of its intersection with Marketplace Drive to a point 797 feet south of the same intersection.

One (1) space on the Town-owned parking lot fronting on South Bond Street, south of Thomas Street.

West Courtland Street, south side, loading zone, from a point 73 feet east of Bond Street to a point 93 feet east of the same intersection.

Hays Street, west side, from a point 25 feet south of its intersection with Thomas Street, to a point 65 feet south of the same intersection.

The east side of Hickory Avenue from a point 320 feet north of its intersection with Pennsylvania Avenue to its intersection with Lee Way between the hours of 8:00 a.m. and 5:00 p.m., Monday through Friday, except the space designated for handicap parking.

North Main Street, west side from a point 100 feet south of Lee Street for a distance of 20 feet.

South Main Street, east side from a point 100 feet north of Courtland Street for a distance of 20 feet.

South Main Street, west side from a point 125 feet south of Courtland Street for a distance of 20 feet.

State Multi-Service Center drop-off lane, south side of West Pennsylvania Avenue between Bond Street and Hays Street.

State Multi-Service Center drop-off lane, west side of South Bond Street between Pennsylvania Avenue and Thomas Street.

Twelve (12) spaces on the Pennsylvania Avenue parking lot located fronting on the north side of Pennsylvania Avenue between Main Street and Hickory Avenue.

AND BE IT FURTHER RESOLVED by the Bel Air Board of Town Commissioners that this Resolution shall become effective upon the date of its passage.

PASSED AND APPROVED: _____

AYES:

NAYES:

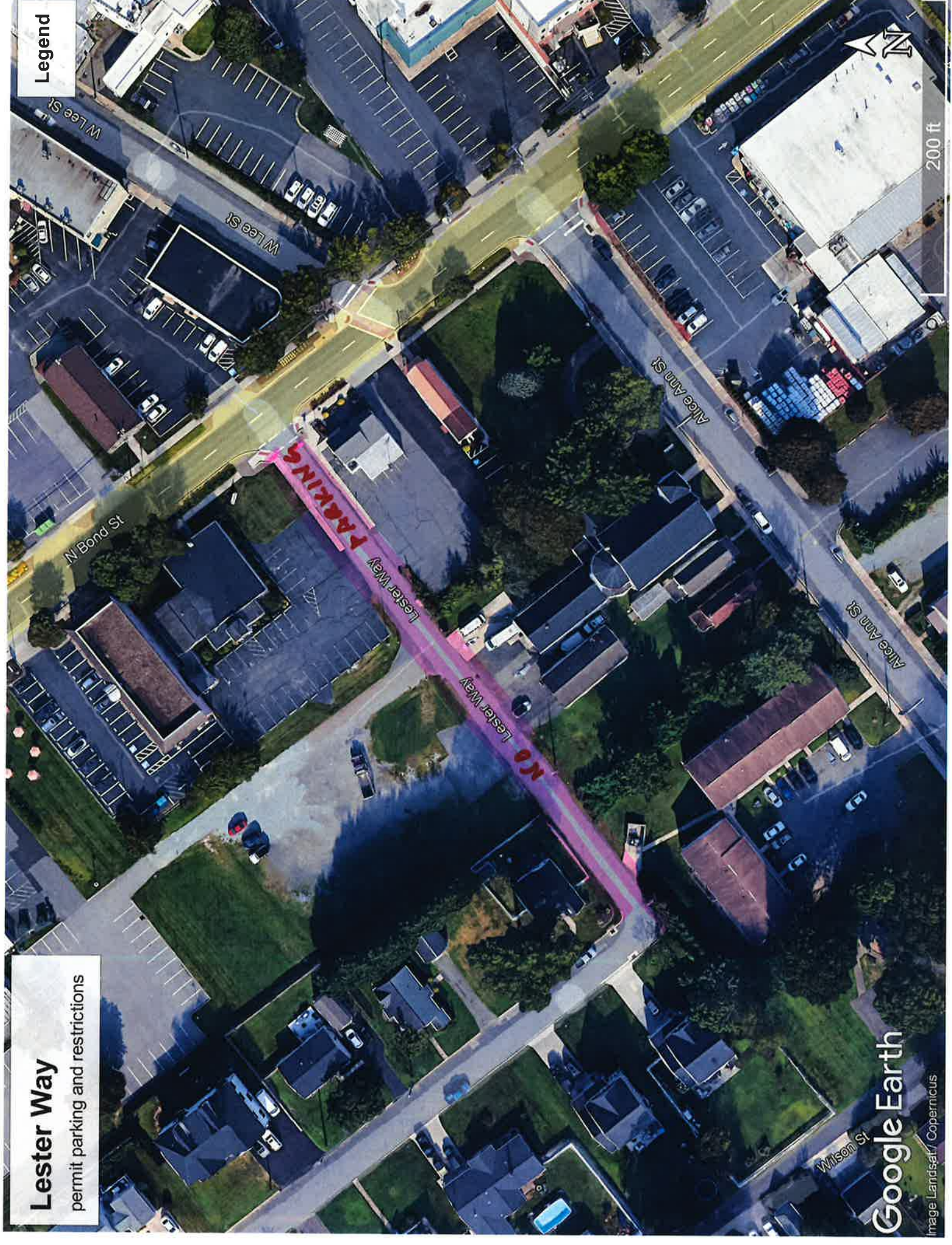
ABSENT:

Paula S. Etting, Chair
Board of Town Commissioners

Michael L. Krantz, Town Clerk

Legend

Lester Way
permit parking and restrictions



Google Earth

Image Landsat/ Copernicus