

PROJECT DATA - PHASE III

RETAIL BUILDINGS

MAJOR TENANT A	35,684 SF
SHOPS	56,905 SF
TOTAL PROJECT AREA	94,567 SF

RETAIL PARKING

MAJOR A PARKING REQ'D (5.0/1,000 SF)	179 SPACES
SHOPS PARKING REQ'D (5.0/1,000 SF)	295 SPACES
TOTAL PARKING REQ'D	474 SPACES
TOTAL PARKING PROVIDED	525 SPACES
RETAIL PARKING RATIO PROVIDED	5.55 /1,000 SF

PROJECT DATA - PHASE IV

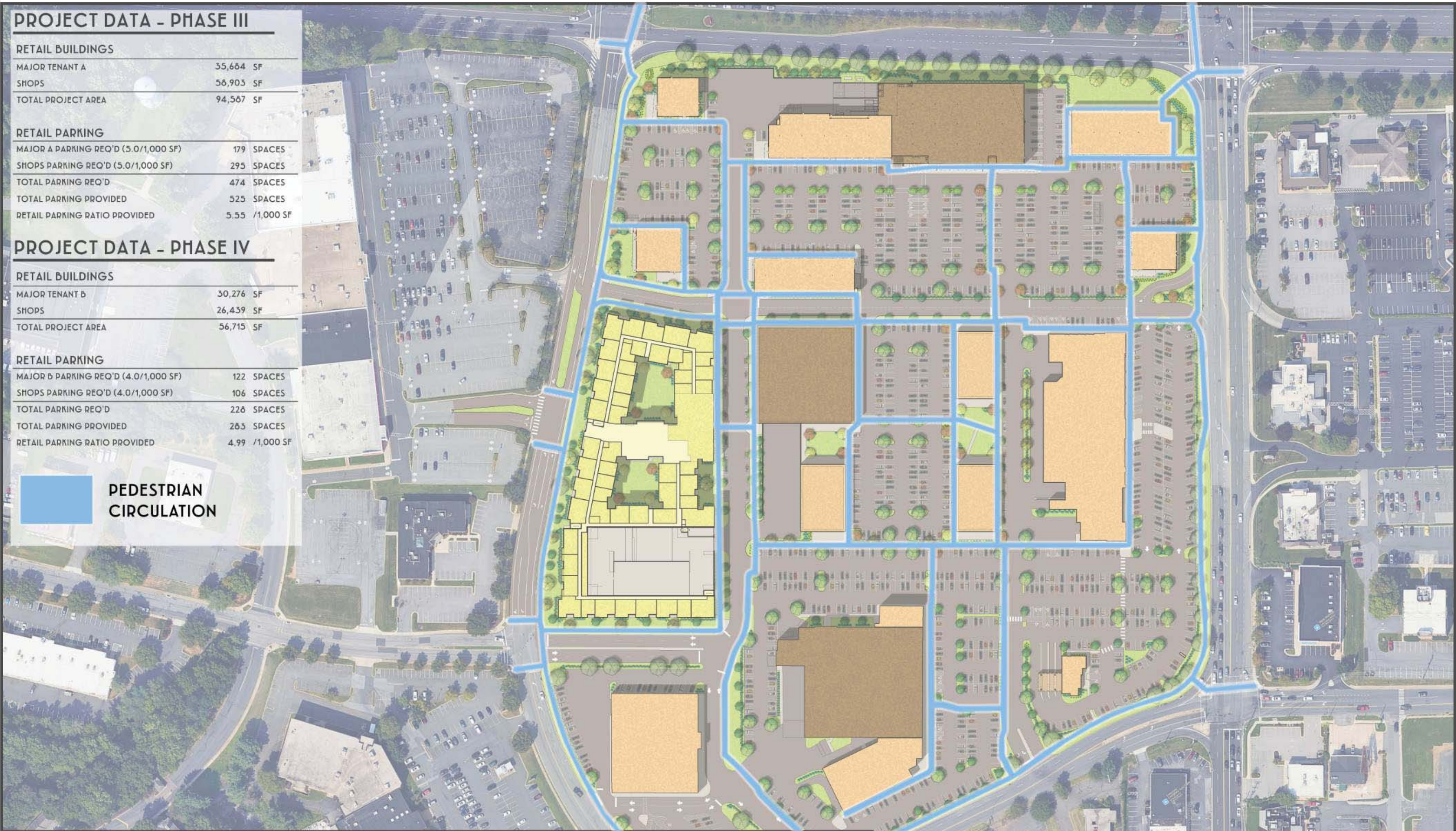
RETAIL BUILDINGS

MAJOR TENANT B	30,276 SF
SHOPS	26,439 SF
TOTAL PROJECT AREA	56,715 SF

RETAIL PARKING

MAJOR B PARKING REQ'D (4.0/1,000 SF)	122 SPACES
SHOPS PARKING REQ'D (4.0/1,000 SF)	106 SPACES
TOTAL PARKING REQ'D	228 SPACES
TOTAL PARKING PROVIDED	263 SPACES
RETAIL PARKING RATIO PROVIDED	4.99 /1,000 SF

 PEDESTRIAN CIRCULATION



SJC VENTURES

PROJECT

HARFORD MALL
BEL AIR, MD

DRAWING
SP.15 - PHASE III & IV -
CIRCULATION EXHIBIT

DATE
2025.04.03

1
SP.15 **SITE PLAN**
SCALE: 1" = 160'

