



THE PETTIT GROUP, LLC
 Engineering • Architecture • Planning
 497 Center Street • Sewell, NJ 08080
 Tel: 856-464-9600 Fax: 856-464-9606
 www.pettitgroup.com
 Certificate of Authorization No. 246A28131400

REVISIONS		
NO.	DESCRIPTION	DATE
	ISSUE FOR REVIEW	08/01/25

NOT FOR CONSTRUCTION

ALL DOCUMENTS PREPARED BY THE PETTIT GROUP, LLC ARE INSTRUMENTS OF SERVICE IN RESPECT TO THE PROJECT. THEY ARE NOT INTENDED OR REPRESENTED TO BE SUITABLE FOR REUSE BY OWNER OR OTHERS ON EXTENSIONS OF THE PROJECT OR ANY OTHER PROJECT. ANY REUSE WITHOUT WRITTEN PERMISSION BY THE PETTIT GROUP, LLC FOR THE SPECIFIC PURPOSE INTENDED WILL BE AT THE OWNER'S SOLE RISK AND WITHOUT LIABILITY OR LEGAL EXPOSURE TO THE PETTIT GROUP, LLC AND OWNER SHALL INDemnIFY AND HOLD HARMLESS THE PETTIT GROUP, LLC FROM CLAIMS, DAMAGES, LOSSES AND EXPENSES ARISING OUT OF OR RESULTING THEREFROM.

THE CONTRACTOR MUST VERIFY ALL DIMENSIONS PRIOR TO PROCEEDING WITH THE WORK AND NOTIFY THE OWNER OF ANY DISCREPANCIES. THE CONTRACTOR SHALL UNDERSTAND THAT THE LOCATION OF UTILITIES SHOWN ON THE PLANS ARE ONLY APPROXIMATE. IT IS IMPORTANT TO NOTE THAT NOT ALL UTILITIES MAY BE SHOWN ON THE PLANS. IT IS THE RESPONSIBILITY OF THE CONTRACTOR TO LOCATE ALL UTILITIES (AERIAL AND BURIED) PRIOR TO THE START OF CONSTRUCTION. THE CONTRACTOR IS RESPONSIBLE TO CONTACT THE UNDERGROUND UTILITY MARK OUT SERVICE (1-800-275-0800) PRIOR TO THE START OF CONSTRUCTION. THE CONTRACTOR IS RESPONSIBLE TO REPAIR (AT HIS EXPENSE) ALL DAMAGED UTILITIES RESULTING FROM HIS WORK.

DESIGNED BY: DT	JOB NO: 1061-348
DRAWN BY: AA	DATE: 08.01.2025
CHECKED BY: TH	SCALE: AS NOTED

TACO BELL

504 BALTIMORE PIKE
 BEL AIR, MD 21014

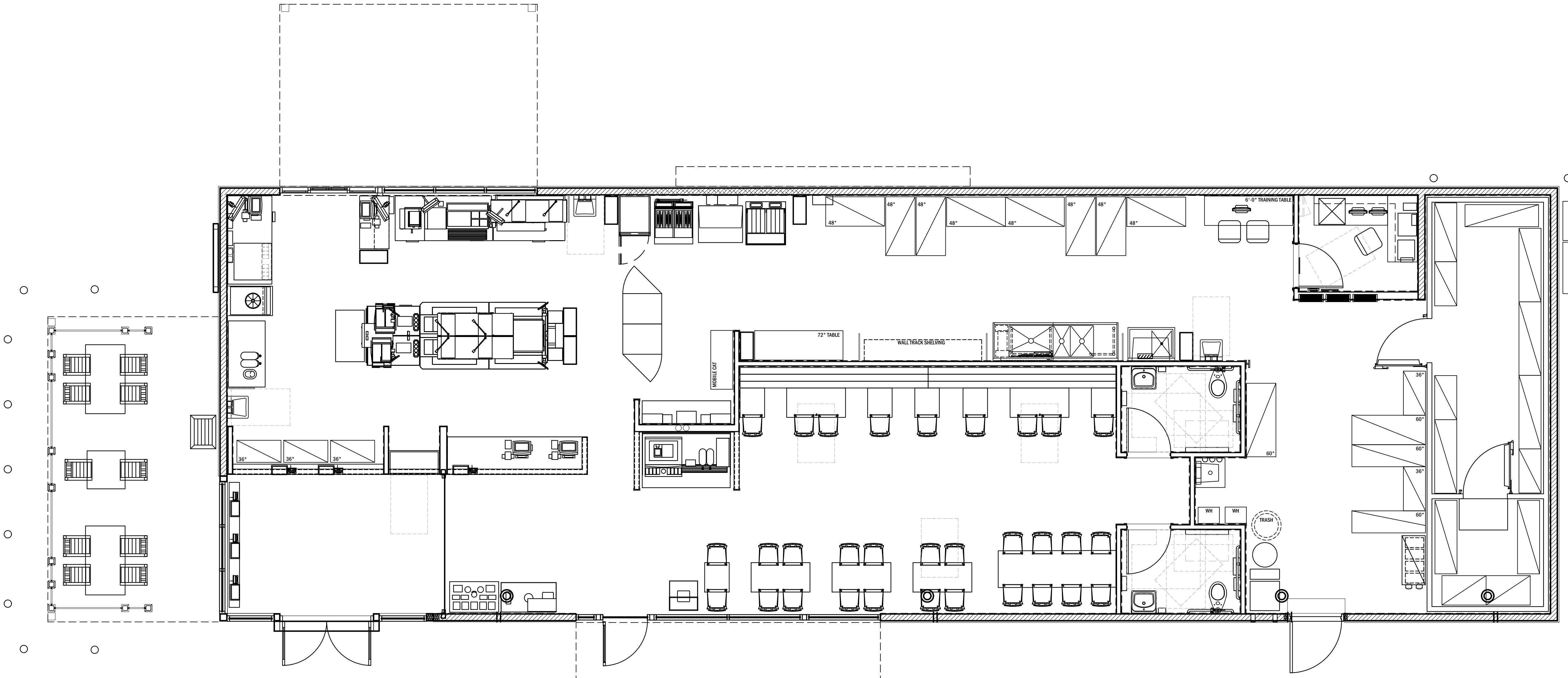
FOR
 BALTIMORE INVESTORS, LLC.
 14 BALLGOMINGO ROAD
 CONSHOHOCKEN, PA 19428

TIMOTHY HOGAN
 AIA, NCARB
 Registered Architect
 STATE OF MARYLAND • LICENSE
 #20276

SHEET TITLE:
FLOOR PLAN

SHEET NUMBER:
A1.0

DO NOT SCALE DRAWINGS




REVISIONS		
NO.	DESCRIPTION	DATE
	ISSUE FOR REVIEW	08/01/25

NOT FOR CONSTRUCTION

ALL DOCUMENTS PREPARED BY THE PETTIT GROUP, LLC ARE INSTRUMENTS OF SERVICE IN RESPECT TO THE PROJECT. THEY ARE NOT INTENDED OR REPRESENTED TO BE SUITABLE FOR REUSE BY OWNER OR OTHERS ON EXTENSIONS OF THE PROJECT OR ANY OTHER PROJECT. ANY REUSE WITHOUT WRITTEN PERMISSION BY THE PETTIT GROUP, LLC FOR THE SPECIFIC PURPOSE INTENDED WILL BE AT THE OWNER'S SOLE RISK AND WITHOUT LIABILITY OR LEGAL EXPOSURE TO THE PETTIT GROUP, LLC AND OWNER SHALL INDISTINGUISHABLY AND HOLD HARMLESS THE PETTIT GROUP, LLC FROM CLAIMS, DAMAGES, LOSSES AND EXPENSES ARISING OUT OF OR RESULTING THEREFROM.

THE CONTRACTOR MUST VERIFY ALL DIMENSIONS PRIOR TO PROCEEDING WITH THE WORK AND NOTIFY THE OWNER OF ANY DISCREPANCIES. THE CONTRACTOR SHALL UNDERSTAND THAT THE LOCATION OF UTILITIES SHOWN ON THE PLANS ARE ONLY APPROXIMATE. IT IS IMPORTANT TO NOTE THAT NOT ALL UTILITIES MAY BE SHOWN ON THE PLANS. IT IS THE RESPONSIBILITY OF THE CONTRACTOR TO LOCATE ALL UTILITIES (AERIAL AND BURIED) PRIOR TO THE START OF CONSTRUCTION. THE CONTRACTOR IS RESPONSIBLE TO CONTACT THE UNDERGROUND UTILITY MARK-OUT SERVICE (1-800-255-0889) PRIOR TO THE START OF CONSTRUCTION. THE CONTRACTOR IS RESPONSIBLE TO REPAIR (AT HIS EXPENSE) ALL DAMAGED UTILITIES RESULTING FROM HIS WORK.

DESIGNED BY: DT	JOB NO: 1061-348
DRAWN BY: AA	DATE: 08.01.2025
CHECKED BY: TH	SCALE: AS NOTED

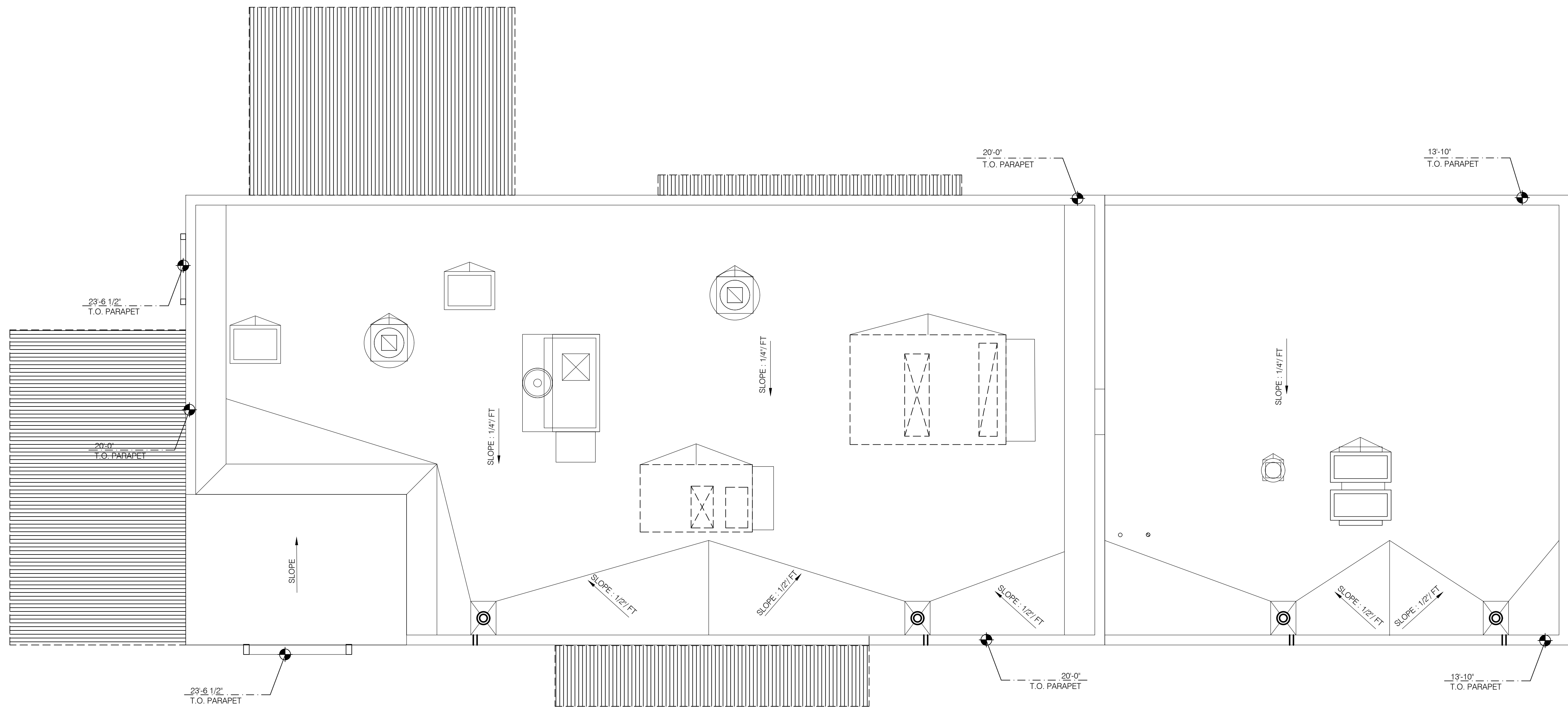

504 BALTIMORE PIKE
BEL AIR, MD 21014
 FOR
BALTIMORE INVESTORS, LLC.
 14 BALLGOMINGO ROAD
 CONSHOHOCKEN, PA 19428


TIMOTHY HOGAN
 AIA, NCARB
 Registered Architect
 STATE OF MARYLAND • LICENSE
 #20276

SHEET TITLE:
ROOF PLAN

SHEET NUMBER:
A3.0

DO NOT SCALE DRAWINGS




THE PETTIT GROUP, LLC
 Engineering • Architecture • Planning
 497 Center Street • Sewell, NJ 08080
 Tel: 856-464-9600 Fax: 856-464-9606
 www.pettitgroup.com
 Certificate of Authorization No. 24GA28131400

REVISIONS		
NO.	DESCRIPTION	DATE
	ISSUE FOR REVIEW	08/01/25

NOT FOR CONSTRUCTION

ALL DOCUMENTS PREPARED BY THE PETTIT GROUP, LLC ARE INSTRUMENTS OF SERVICE IN RESPECT TO THE PROJECT. THEY ARE NOT INTENDED OR REPRESENTED TO BE SUITABLE FOR REUSE BY OWNER OR OTHERS ON EXTENSIONS OF THE PROJECT OR ANY OTHER PROJECT ANY REUSE WITHOUT WRITTEN PERMISSION BY THE PETTIT GROUP, LLC. FOR THE SPECIFIC PURPOSE INTENDED WILL BE AT THE OWNER'S SOLE RISK, AND WITHOUT LIABILITY OR LEGAL EXPOSURE TO THE PETTIT GROUP, LLC AND OWNER SHALL INDEMNIFY AND HOLD HARMLESS THE PETTIT GROUP, LLC FROM CLAIMS, DAMAGES, LOSSES AND EXPENSES ARISING OUT OF OR RESULTING THEREFROM.

THE CONTRACTOR MUST VERIFY ALL DIMENSIONS PRIOR TO PROCEEDING WITH THE WORK AND NOTIFY THE OWNER OF ANY DISCREPANCIES. THE CONTRACTOR SHALL UNDERSTAND THAT THE LOCATION OF UTILITIES SHOWN ON THE PLANS ARE ONLY APPROXIMATE. IT IS IMPORTANT TO NOTE THAT NOT ALL UTILITIES MAY BE SHOWN ON THE PLANS. IT IS THE RESPONSIBILITY OF THE CONTRACTOR TO LOCATE ALL UTILITIES (AERIAL AND BURIED) PRIOR TO THE START OF CONSTRUCTION. THE CONTRACTOR IS RESPONSIBLE TO CONTACT THE UNDERGROUND UTILITY MARK OUT SERVICE (1-800-725-0800) PRIOR TO THE START OF CONSTRUCTION. THE CONTRACTOR IS RESPONSIBLE TO REPAIR (AT HIS EXPENSE) ALL DAMAGED UTILITIES RESULTING FROM HIS WORK.

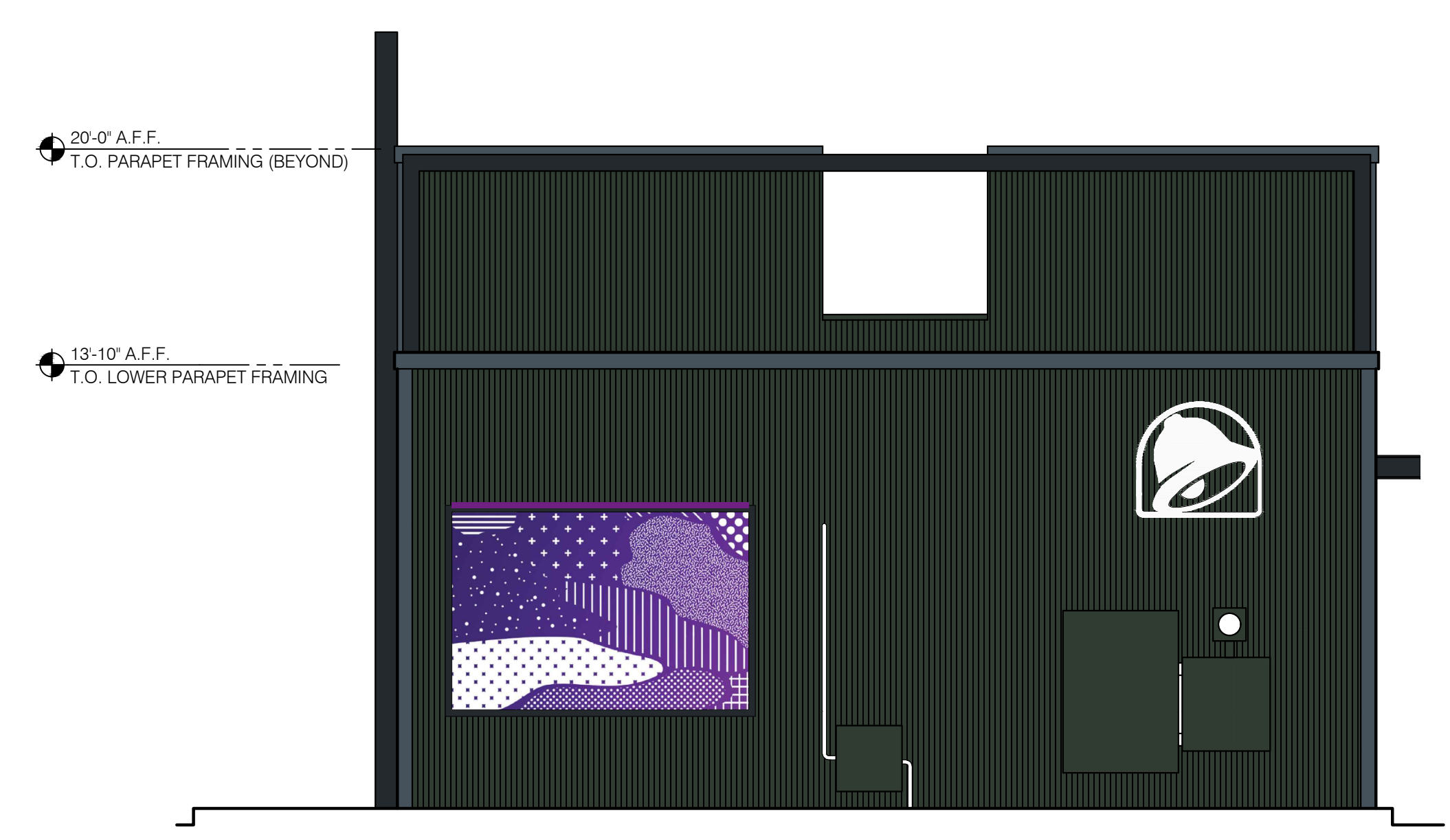
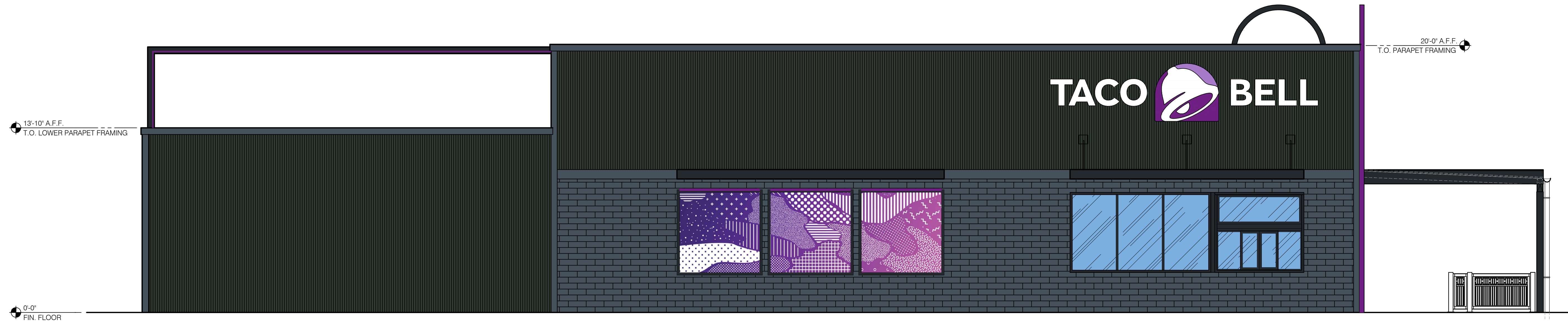
DESIGNED BY:	DT	JOB NO:	1061-348
DRAWN BY:	AA	DATE:	08.01.2025
CHECKED BY:	TH	SCALE:	AS NOTED


504 BALTIMORE PIKE
BEL AIR, MD 21014
 FOR
BALTIMORE INVESTORS, LLC.
 14 BALLGOMINGO ROAD
 CONSHOHOCKEN, PA 19428

TIMOTHY HOGAN
 AIA, NCARB
 Registered Architect
 STATE OF MARYLAND • LICENSE #20276

EXTERIOR ELEVATIONS

SHEET NUMBER:
A4.0
 DO NOT SCALE DRAWINGS





RIGHT SIDE ELEVATION 1/4"=1'-0" **A**

TAG	QTY	ITEM DESCRIPTION	ELEC
V-03X	1	ENTRY ARCH ELEMENT	YES
V-04X	1	SECONDARY ARCH ELEMENT	YES
V-04.52	2	52" SWINGING BELL PURPLE LOGO FACE LIT	YES
V-09.24W	2	24" WHITE CHANNEL LETTERS VERTICAL	YES
V-04.42	1	42" SWINGING BELL PURPLE LOGO FACE LIT	YES
V-102	1	CANOPY 4'-0" x 20'-1" x 8"	
V-101 DT	1	CANOPY 1'-4" x 20'-0" x 8"	

NOTE: REFER TO GRAPHICS PACKAGE FOR ADDITIONAL INFORMATION

SIGNAGE & CANOPY **G**

NOT USED **E**

NOT USED **D**

NOT USED **B**

SYMBOL	AREA	MANUFACTURER	COLOR	REMARKS
1	LOWER HALF OF BUILDING	INTERSTATE BRICK	THIN BRICK - OBSIDIAN	
2	SIDING, UPPER HALF OF BUILDING AND REAR	PAC-CLAD	MAITTE BLACK	BOX RIB WALL PANEL 24 GA. STEEL 1-3/8" DEEP PANELS
3	WALL TRIM	AZEK PAINT PRO PVC TRIM	CAVIAR (SW6990), SEMI-GLOSS	
4	PARAPET CAP		SW6990 CAVIAR	
5	DOWNSPOUTS, COLLECTOR BOXES, OVERFLOW SCUPPERS		SW6990 CAVIAR	
6	SERVICE DOOR AND FRAME		SW6990 CAVIAR	
7	METAL TUBE FRAME - REAR OF BUILDING		REFER TO SIGN SHOP DRAWINGS FOR FINISH COLORS, TYP.	
8	METAL ARCH TUBE FRAME (BY VENDOR)		REFER TO SIGN SHOP DRAWINGS FOR FINISH COLORS, TYP.	
9	RAILINGS AND POSTS	RESTAURANT SUPPLY CHAIN SOLUTIONS	PANELS & POSTS PRE-FINISHED TO MATCH SW6990 CAVIAR (PREFERRED POWDER COATED)	
10				
11	EXTERIOR METAL CANOPIES, BRACKETS AND COLUMNS (BY VENDOR)		PAINTED OR POWDERCOATED TO MATCH SW6990 CAVIAR	
12	ACCENT PANEL (BY VENDOR)	BRIDGER STEEL	REFER TO SIGN SHOP DRAWINGS FOR FINISH COLORS, TYP.	
13				
14				
15	EXTERIOR PAINT	SHERWIN WILLIAMS	SW6990 (CAVIAR)	

EXTERIOR FINISH SCHEDULE **H**

MISCELLANEOUS
 A. SEE SHEET A1.1 "WINDOW TYPES" FOR WINDOW ELEVATIONS.

SEALERS (REFER TO SPECS):
 A. SEALANT AT ALL WALL AND ROOF PENETRATIONS.
 B. SEALANT AT ALL WINDOW AND DOOR FRAMES AND JAMB. DO NOT SEAL SILL @ WINDOWS.
 C. APPLY NEOPRENE GASKET (CONT.) BETWEEN BUILDING AND CANOPY.

CRITICAL DIMENSIONS
 A. REQUIRED CLEAR OPENING WIDTH TO ENSURE COORDINATION WITH STANDARD SIGNAGE/BUILDING ELEMENTS DIMENSIONS.

PAINTING:
 APPLICATOR MUST DO THEIR DUE DILIGENCE WITH PREPARATION.
 PRIMER: 1 COAT SW A24WR300
 FINISH: 2 COATS SW A82-100 SERIES, MATCH COLORS FROM MATERIAL SCHEDULE.
 A-100 EXTERIOR LATEX SATIN.
 PAINT PRO AZEK FOR ALL DARK FINISHES.

GENERAL NOTES **F**

- 1 BUILDING SIGN, BY VENDOR. SEE STRUCTURAL BLOCKING ELEVATIONS, SEE ELECTRICAL PLANS FOR POWER REQUIREMENTS.
- 2 DRIVE THRU WINDOW. SEE SHEET A1.0 AND A1.1.
- 3 METAL CANOPY, PROVIDED BY SIGN VENDOR, INSTALLED BY G.C.
- 4 ALUMINUM STOREFRONT, WINDOW/DOOR SYSTEM, TYPICAL. SEE A1.1.
- 5 SWITCH GEAR. PAINT TO MATCH WALL.
- 6 PARAPET COPING. IF DURO-LAST EDGE TRIM IS USED. USE THE DURO-LAST PRE-FINISHED EDGE TRIM. SEE DETAIL 2/A6.0.
- 7 CO2 FILLER VALVE & COVER. SEE DETAIL 5/A6.2 SIM.
- 8 GREASE TANK FILLER VALVE & COVER.
- 9 GAS SERVICE.
- 10 ELECTRIC SERVICE.
- 11 STOREFRONT DOOR. REFER TO DOOR SCHEDULE A1.1.
- 12 WALL PACK LIGHT FIXTURE.
- 13 HOSE BIBB LOCATION. REFER TO PLUMBING AND DETAIL 8/A6.2
- 14 ROOF ACCESS NOTCH
- 15 OVERFLOW DRAIN
- 16 CORRUGATED METAL ROOF - BY G.C.
- 17 ALUMINUM TUBE POST. SEE STRUCTURAL DWGS. TO BE PAINTED, SEE SCHEDULE.
- 18 ALL EDGES WHERE PATIO ROOF MEETS HARDIE SIDING TO BE CAULKED/SEALED.

- 19 GUTTER AND DOWNSPOUT, PAINT TO MATCH COLUMN
- 20 PATIO RAILING, SEE A-2.0 FOR DETAILS, PAINT TO MATCH COLUMN.
- 21 WOOD RAFTERS. SEE STRUCTURAL DWGS.
- 22 ARCHITECTURAL METAL PANELS.
- 23 THIN BRICK.
- 24 SERVICE DOOR. OWNER-SUPPLIED / G.C. INSTALL.
- 25 BOLLARDS PER CIVIL.
- 26 WALL LIGHTING - LIGHTING VENDOR SUPPLIED / GC INSTALLED. SEE SHEET E4.0 AND ELECTRICAL DRAWINGS.
- 27 ILLUMINATED METAL TUBE ARCH BY SIGN VENDOR - SEE CUTSHEET FOR MORE INFO.
- 28 VERIFY ALL UL RATED STICKERS ON SIGNS ARE NOT WITHIN CUSTOMER VISIBILITY WHEN ALLOWABLE. WHEN JURISDICTION REQUIRES CUSTOMER VISIBILITY, MAKE SURE STICKERS ARE NOT PROMINENTLY DISPLAYED. VENDOR STICKERS SHOULD NOT BE VISIBLE TO THE GENERAL PUBLIC.
- 29 METAL WRAP TO MATCH EXTERIOR STOREFRONT FRAMING (BLACK).
- 30 PAINTED ALUMINUM FRAME WITH INTEGRATED LED LIGHTING BY VENDOR.
- 31 ASSUME D/T LAND SURFACE IS 6" BELOW THE FINISH FLOOR. REFER TO GRADING & SITE PLAN, COORDINATE WITH CIVIL ENGINEER.
- 32 OVERFLOW DRAIN. SEE PLUMBING DRAWINGS.
- 33 PURPLE LED WALL WASH LIGHT, BY SIGN VENDOR. SEE A6.2/5.

KEY NOTES **C**

REVISIONS		
NO.	DESCRIPTION	DATE
	ISSUE FOR REVIEW	08/01/25

NOT FOR CONSTRUCTION

ALL DOCUMENTS PREPARED BY THE PETTIT GROUP, LLC ARE INSTRUMENTS OF SERVICE IN RESPECT TO THE PROJECT. THEY ARE NOT INTENDED OR REPRESENTED TO BE SUITABLE FOR REUSE BY OWNER OR OTHERS ON EXTENSIONS OF THE PROJECT OR ANY OTHER PROJECT. ANY REUSE WITHOUT WRITTEN PERMISSION BY THE PETTIT GROUP, LLC FOR THE SPECIFIC PURPOSE INTENDED WILL BE AT THE OWNER'S SOLE RISK, AND WITHOUT LIABILITY OR LEGAL EXPOSURE TO THE PETTIT GROUP, LLC AND OWNER SHALL INDEMNIFY AND HOLD HARMLESS THE PETTIT GROUP, LLC FROM CLAIMS, DAMAGES, LOSSES AND EXPENSES ARISING OUT OF OR RESULTING THEREFROM.

THE CONTRACTOR MUST VERIFY ALL DIMENSIONS PRIOR TO PROCEEDING WITH THE WORK AND NOTIFY THE OWNER OF ANY DISCREPANCIES. THE CONTRACTOR SHALL UNDERSTAND THAT THE LOCATION OF UTILITIES SHOWN ON THE PLANS ARE ONLY APPROXIMATE. IT IS IMPORTANT TO NOTE THAT NOT ALL UTILITIES MAY BE SHOWN ON THE PLANS. IT IS THE RESPONSIBILITY OF THE CONTRACTOR TO LOCATE ALL UTILITIES (AERIAL AND BURIED) PRIOR TO THE START OF CONSTRUCTION. THE CONTRACTOR IS RESPONSIBLE TO CONTACT THE UNDERGROUND UTILITY MARK OUT SERVICE (1-800-225-0000) PRIOR TO THE START OF CONSTRUCTION. THE CONTRACTOR IS RESPONSIBLE TO REPAIR (AT HIS EXPENSE) ALL DAMAGED UTILITIES RESULTING FROM HIS WORK.

DESIGNED BY: DT	JOB NO: 1061-348
DRAWN BY: AA	DATE: 08.01.2025
CHECKED BY: TH	SCALE: AS NOTED

PROJECT

TACO BELL

**504 BALTIMORE PIKE
 BEL AIR, MD 21014**

FOR

**BALTIMORE INVESTORS, LLC.
 14 BALLGOMCKEN ROAD
 CONSHOHOCKEN, PA 19428**

TIMOTHY HOGAN
 AIA, NCARB
 Registered Architect
 STATE OF MARYLAND • LICENSE
 #20276

SHEET TITLE:
EXTERIOR ELEVATIONS

SHEET NUMBER:
A4.0

DO NOT SCALE DRAWINGS

