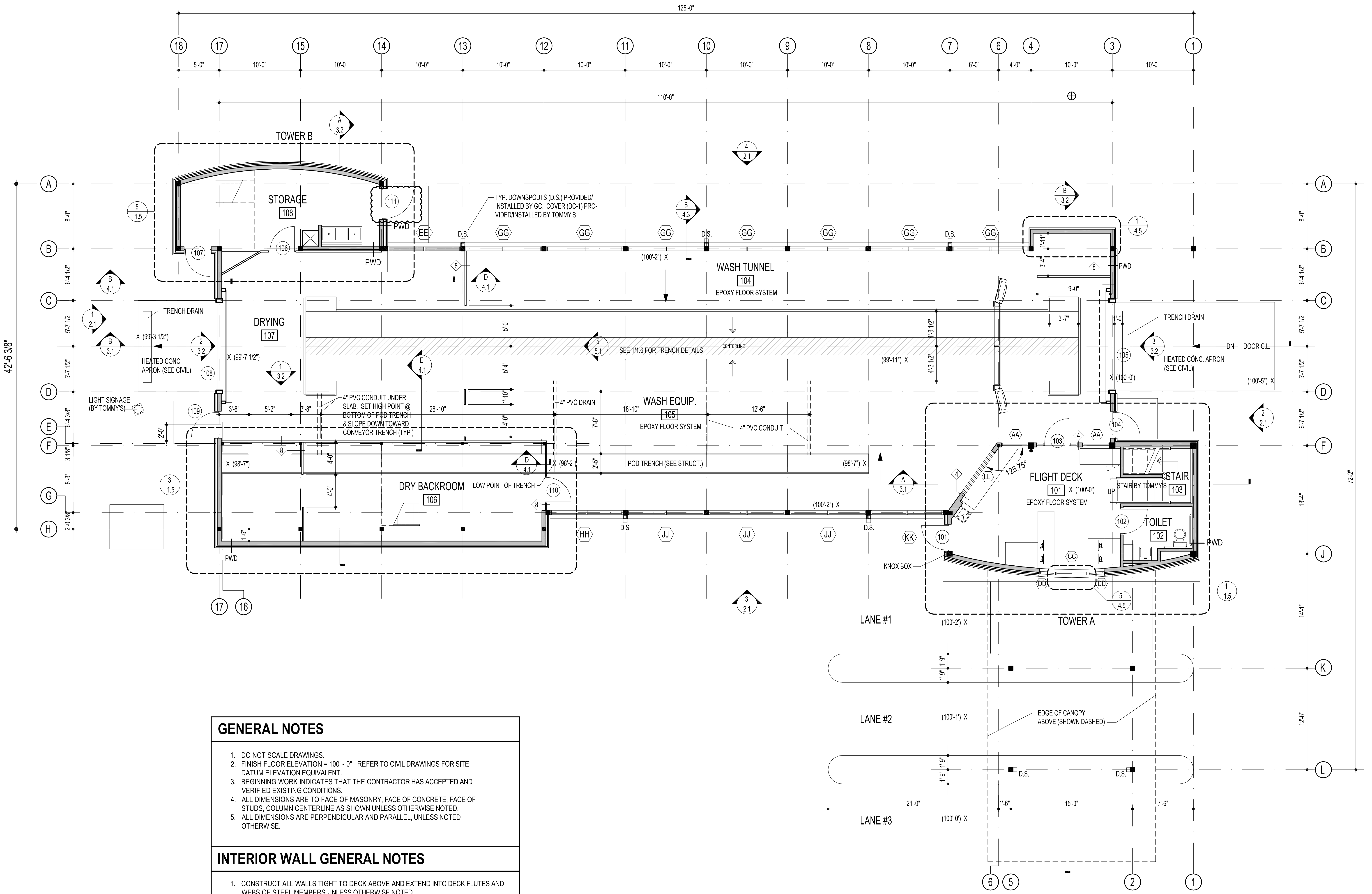


DATE	#	REVISION

TOMMY'S #:	XXXXX
DATE:	8-19-25
DRAWN BY:	SD
DRAWING TITLE:	FLOOR PLAN

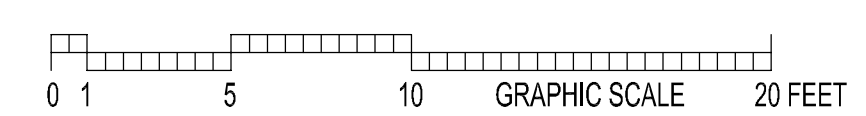


**GENERAL NOTES**

- DO NOT SCALE DRAWINGS.
- FINISH FLOOR ELEVATION = 100' - 0". REFER TO CIVIL DRAWINGS FOR SITE DATUM ELEVATION EQUIVALENT.
- BEGINNING WORK INDICATES THAT THE CONTRACTOR HAS ACCEPTED AND VERIFIED EXISTING CONDITIONS.
- ALL DIMENSIONS ARE TO FACE OF MASONRY, FACE OF CONCRETE, FACE OF STUDS, COLUMN CENTERLINE AS SHOWN UNLESS OTHERWISE NOTED.
- ALL DIMENSIONS ARE PERPENDICULAR AND PARALLEL, UNLESS NOTED OTHERWISE.

**INTERIOR WALL GENERAL NOTES**

- CONSTRUCT ALL WALLS TIGHT TO DECK ABOVE AND EXTEND INTO DECK FLUTES AND WEBS OF STEEL MEMBERS UNLESS OTHERWISE NOTED.
- PROVIDE DEFLECTION TRACK AT THE TOP OF ALL INTERIOR NON-BEARING METAL STUD WALLS CAPABLE OF ACCOMMODATING 3/4" ROOF/FLOOR DEFLECTION.



1 FLOOR PLAN  
1.1 3/16" = 1'-0"

SEAL

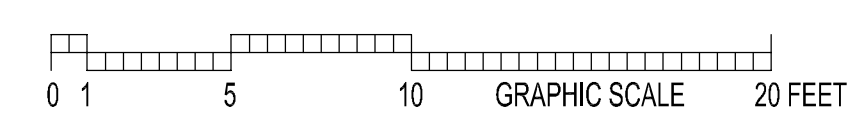
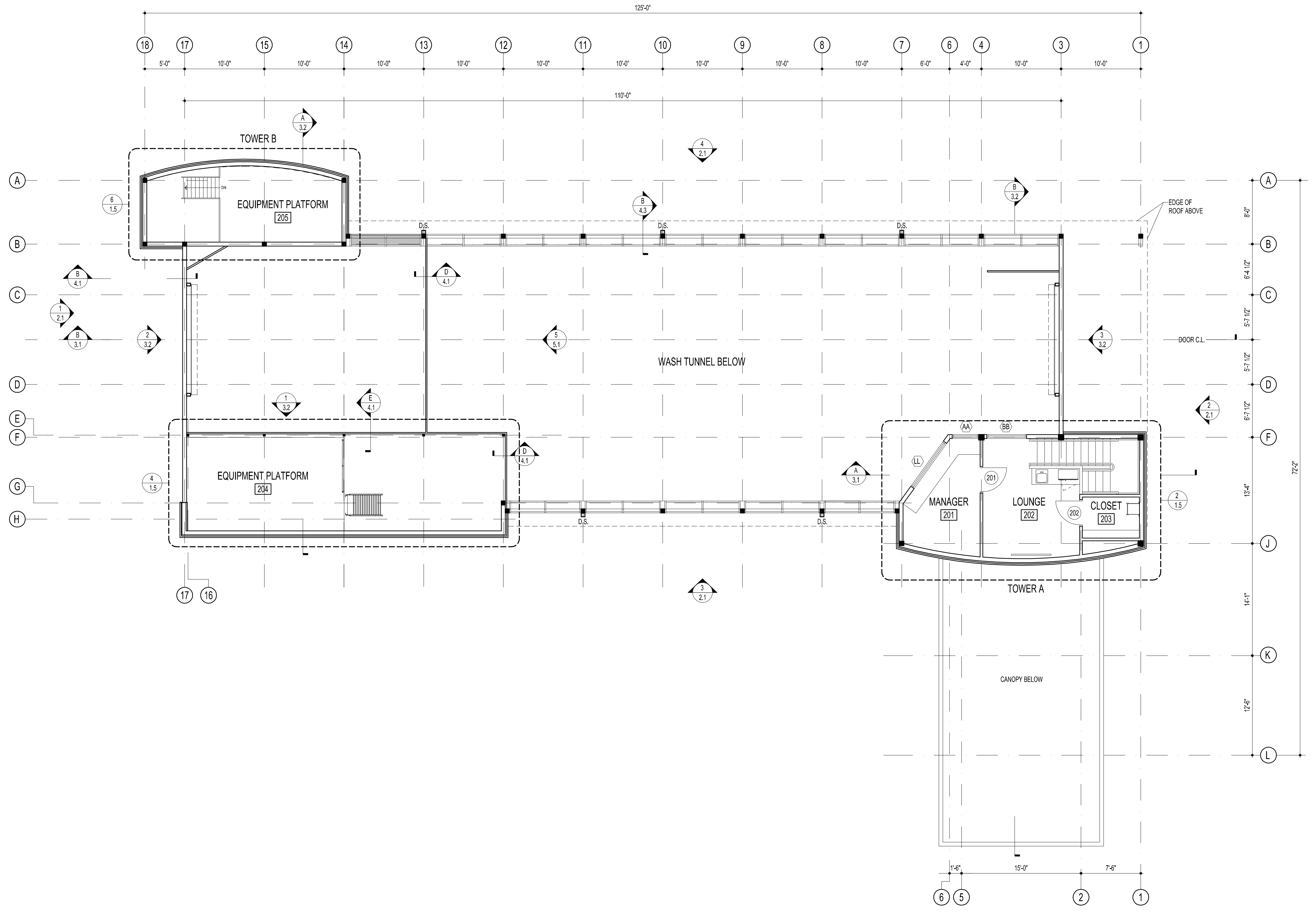
A+A Project #250470  
New Car Wash Facility  
**AUTO SPA EXPRESS #**  
Baltimore Pike  
Bel Air, Maryland

DATE	#	REVISION

TOMMY'S #: XXXXX  
DATE: 8-19-25  
DRAWN BY: SD  
DRAWING TITLE:

**MEZZANIE FLOOR PLAN**

**A1.2**  
COPYRIGHT 2025

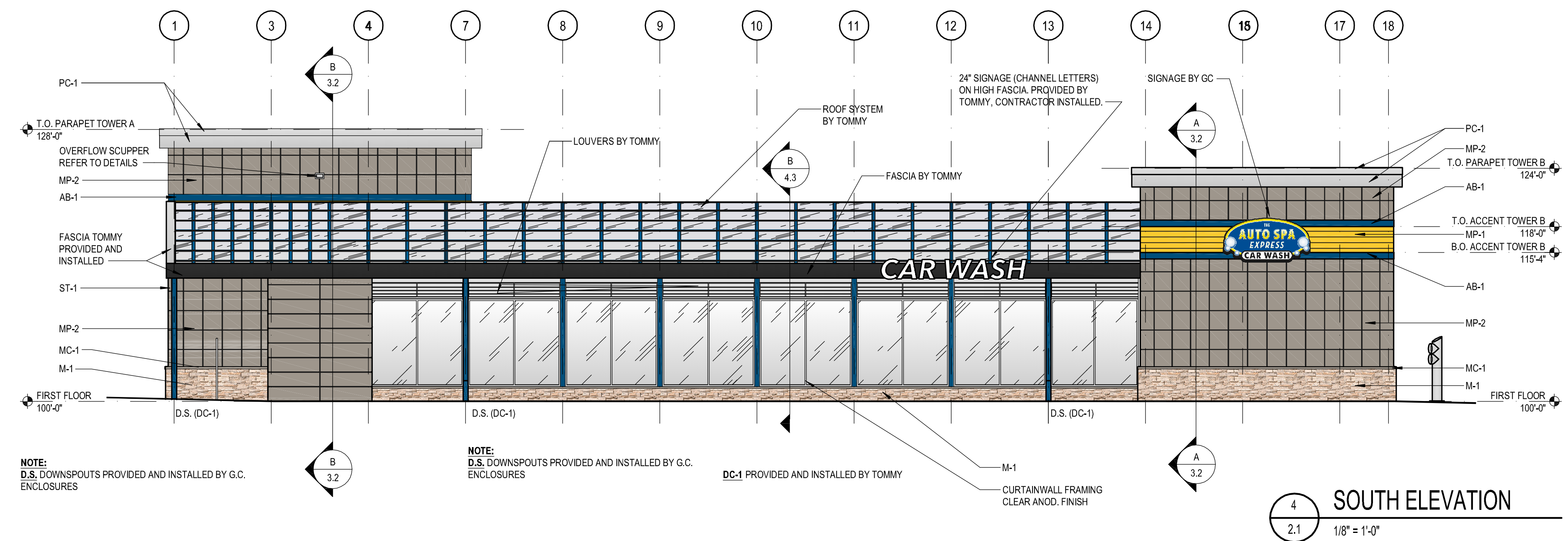


1  
1.2  
3/16" = 1'-0"

**MEZZANIE FLOOR PLAN**

**EXTERIOR MATERIALS LEGEND**

	PREFINISHED METAL PANELS
	CEMENT BOARD PANEL
	PREFINISHED METAL COPING
	ALUM. FLAT STOCK (RAL 5010)
	CORRUGATED METAL PANEL
	MCM PANEL (BLACK)
	GLAZING
	STONE VENEER

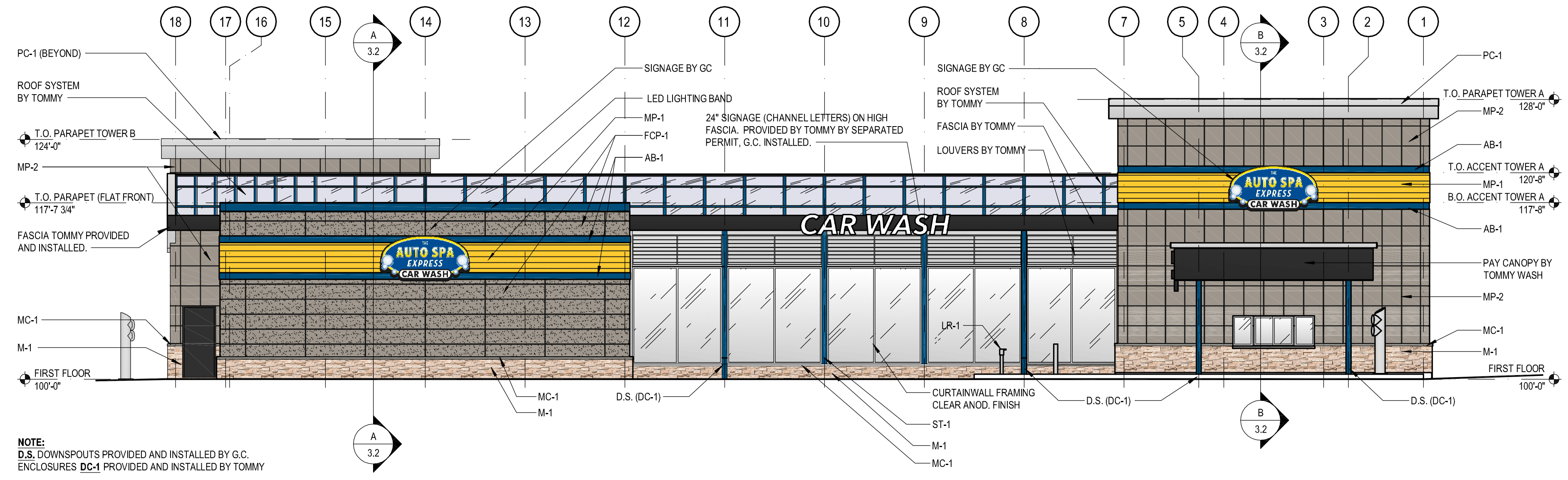


**4 SOUTH ELEVATION**  
2.1 1/8" = 1'-0"

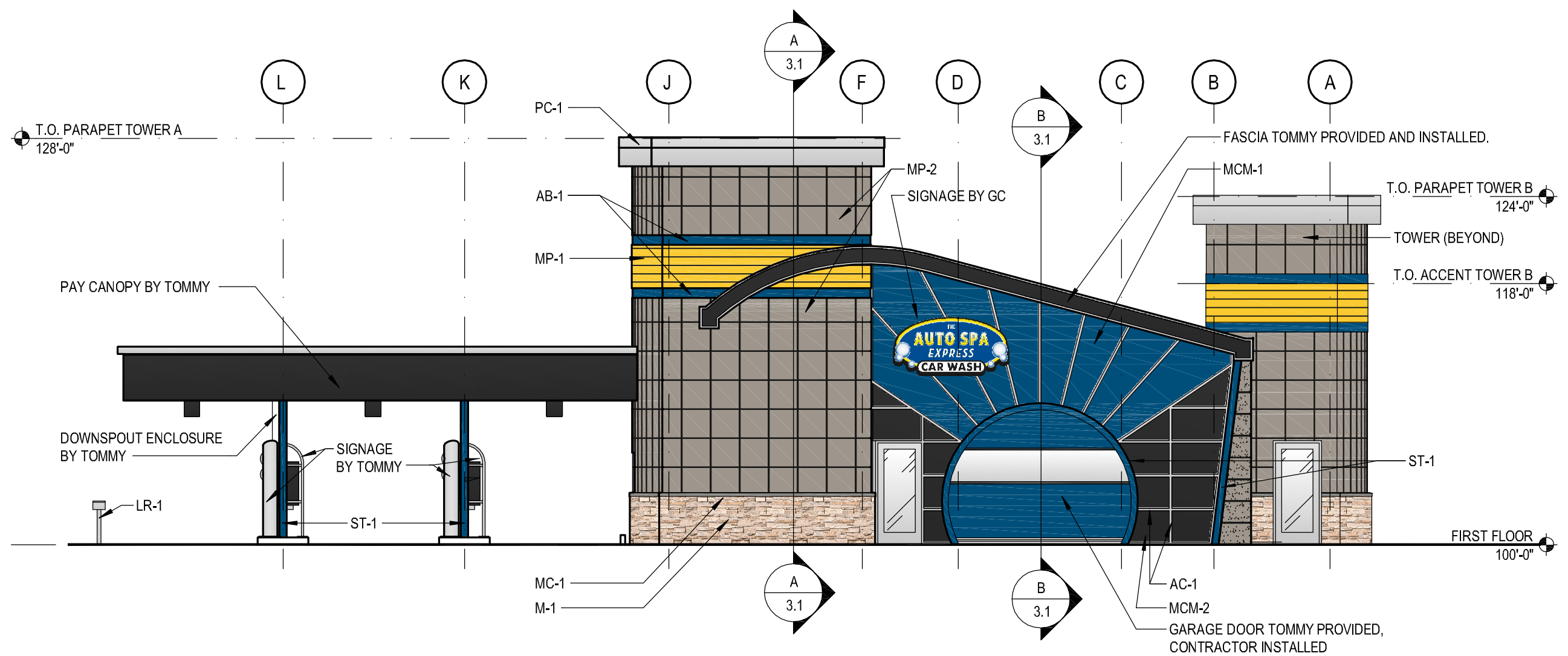
**EXTERIOR MATERIALS SPECS**

TAG	MATERIAL	MFR.	DESCRIPTION	COLOR
AB-1	PREFIN. ALUM. ACCENT BANDING	ATAS	ATAS FLAT SHEET	RAL 5010
AC-1	PREFIN. ALUM. CLOSURE CAPS	TUBELITE	TUBELITE 200 SERIES CURTAINWALL	CLEAR ANNOXIDIZED
DC-1	PREFINISHED ALUMINUM		DOWNSPOUT COVER	RAL 5010
FCP-1	ARCHITECTURAL BLOCK	NICHIHA	FIBER CEMENT PANELS 18" H x 72" W	GRAY
LR-1	LICENSE PLATE READER	TOMMY	BOLLARD	STAINLESS STEEL
M-1	STONE VENEER	BORAL	PRO-FIT LEDGESTONE	SOUTHWEST BLEND
MC-1	PRECAST STONE SILL	ELDORADO	CHISELED EDGE WALL CAP	SMOKE
MCM-1	PREFIN. ALUM. COMPOSITE PANELS	LAMINATORS	LAMINATORS OMEGA SERIES	RAL 5010
MCM-2	PREFIN. ALUM. COMPOSITE PANELS	CITADEL	GLAZE GUARD (SERIES F)	EBONY
MP-1	PROFILED ALUMINUM METAL PANEL	ATAS	ATAS 7.2 BWR360 BELVEDERE	RAL 1018
MP-2	PREFINISHED METAL PANEL	DRI-DESIGN	30"x30" PANEL SIZE	CADET GREY
MP-3	PREFINISHED METAL PANEL	DRI-DESIGN	24"x48" PANEL SIZE	GRAY
PC-1	PREFIN. ALUM. PARAPET CORNICE	REYNOLUX		BRIGHT SILVER METALLIC
ST-1	STRUCTURAL STEEL	R.B.I.		RAL 5010
SF01	INSULATED GLASS		1" INSULATED GLASS LOW-E	CLEAR
SF02				
SF03				
SF04	METAL PANEL INFILL		1" MCM PANEL INFILL	BLACK
SF05				
SF06				

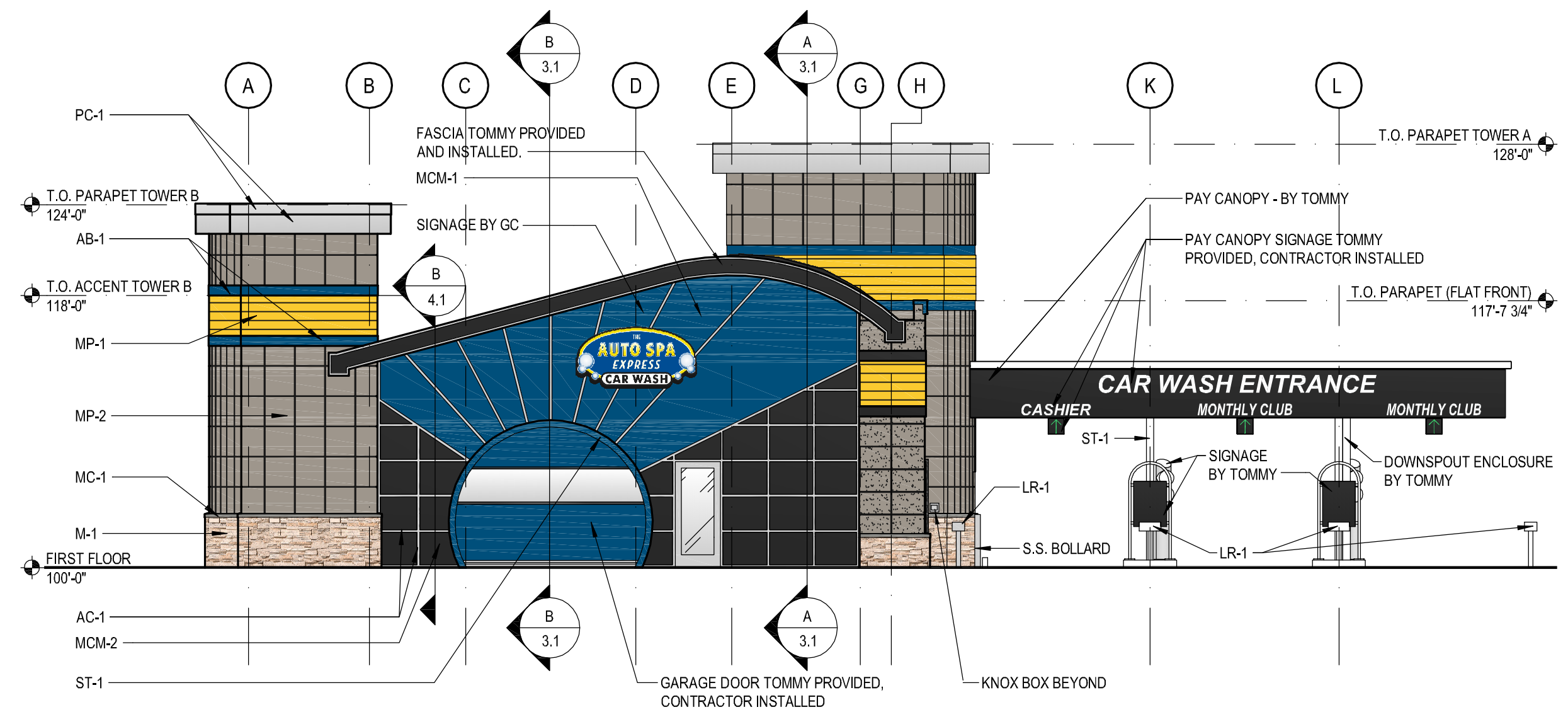
NOTE: GENERAL CONTRACTOR TO SUPPLY ALL MATERIALS/EQUIPMENT EXCEPT ST-1, DC-1 & LR1 TO BE SUPPLIED BY TOMMY.



**3 NORTH ELEVATION**  
2.1 1/8" = 1'-0"



**2 EAST ELEVATION**  
2.1 1/8" = 1'-0"



**1 WEST ELEVATION**  
2.1 1/8" = 1'-0"

PROFESSIONAL CERTIFICATION:  
I CERTIFY THAT THESE DOCUMENTS WERE PREPARED OR APPROVED BY ME, & THAT I AM A DULY LICENSED ARCHITECT UNDER THE LAWS OF THE STATE OF MARYLAND, LICENSE #12116, EXPIRATION DATE 4-29-27.

SEAL

A+A Project #250470  
New Car Wash Facility  
**AUTO SPA EXPRESS #**  
Baltimore Pike  
Bel Air, Maryland

DATE	NO.	REVISION

TOMMY'S #:  
DATE: 8-19-25  
DRAWN BY: SD  
DRAWING TITLE:  
**EXTERIOR ELEVATIONS**