
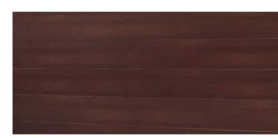

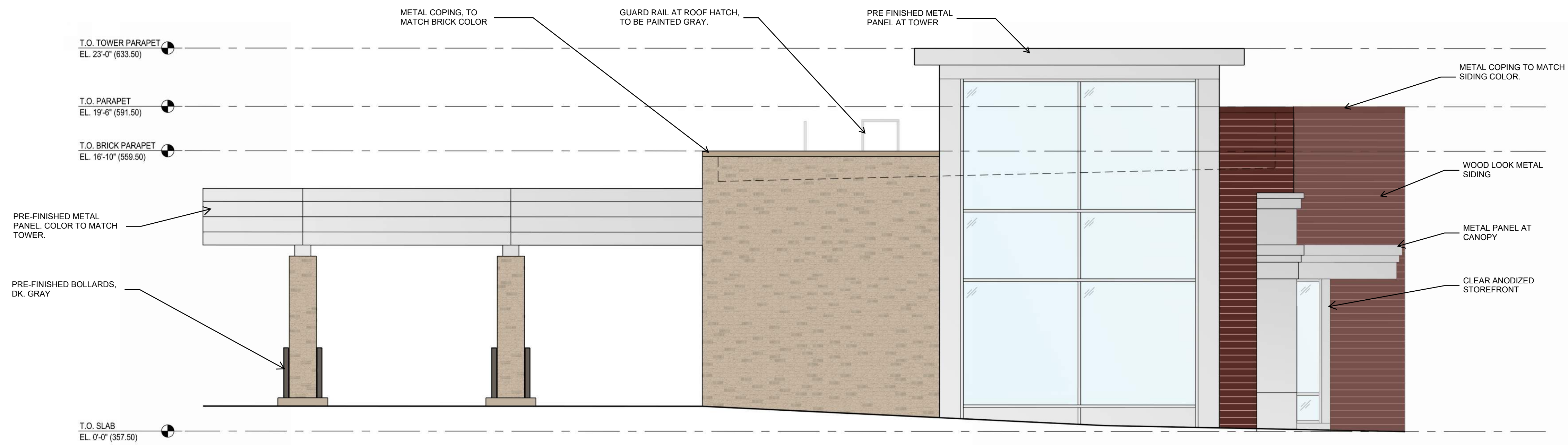


| LEGEND | ITEM | STYLE/FINISH |
|---|-----------------------|--|
|  | BRICK | STANDARD SIZE BRICKS. 1/3 RUNNING BOND INSTALLATION PATTERN. COLORS: SILVERSTONE AND GRAYSTONE |
|  | WOOD-LOOK METAL PANEL | COLOR: DARK WALNUT |
|  | PRE-FINISHED METAL | PRE-FINISHED HEAVY GAUGE ALUMINUM. FINISH: CLEAR ANODIZED |




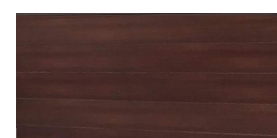

2 WEST (REAR) ELEVATION
Scale: 1/4"=1'-0"

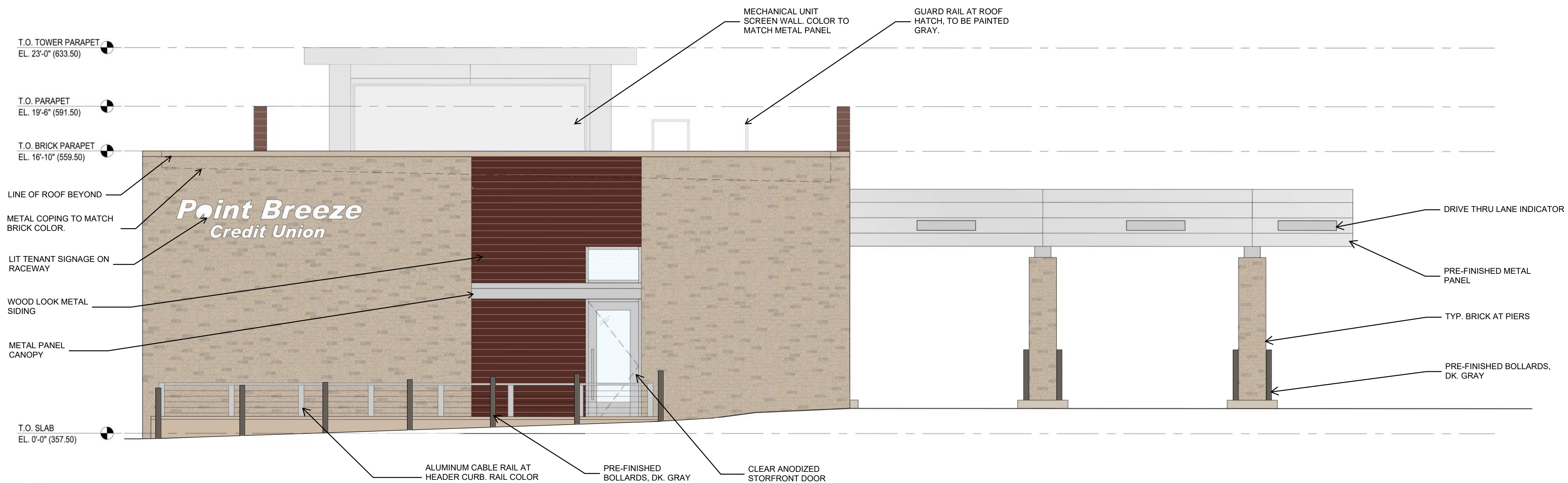


1 SOUTH (SIDE) ELEVATION
Scale: 1/4"=1'-0"

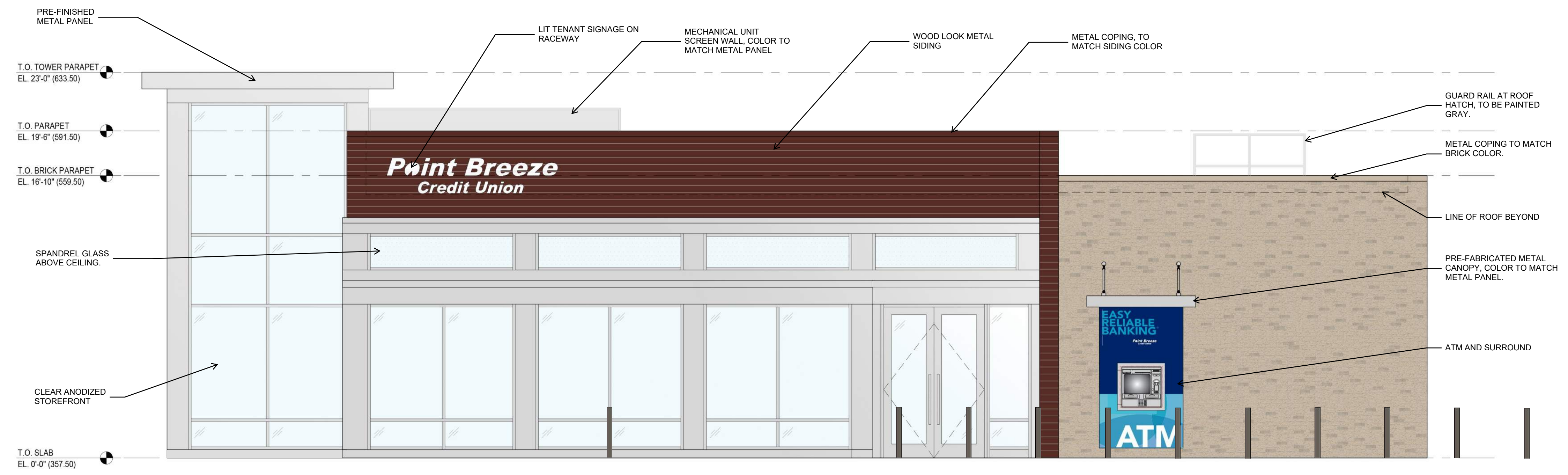
POINT BREEZE CREDIT UNION HARFORD MALL BRANCH - ELEVATIONS



| LEGEND | ITEM | STYLE/FINISH |
|---|-----------------------|--|
|  | BRICK | STANDARD SIZE BRICKS, 1/3 RUNNING BOND INSTALLATION PATTERN. COLORS: SILVERSTONE AND GRAYSTONE |
|  | WOOD-LOOK METAL PANEL | COLOR: DARK WALNUT |
|  | PRE-FINISHED METAL | PRE-FINISHED HEAVY GAUGE ALUMINUM. FINISH: CLEAR ANODIZED |



2 NORTH (SIDE) ELEVATION
Scale: 1/4"=1'-0"



1 EAST (FRONT) ELEVATION
Scale: 1/4"=1'-0"

POINT BREEZE CREDIT UNION HARFORD MALL BRANCH - ELEVATIONS

